

WISER Asia Pacific



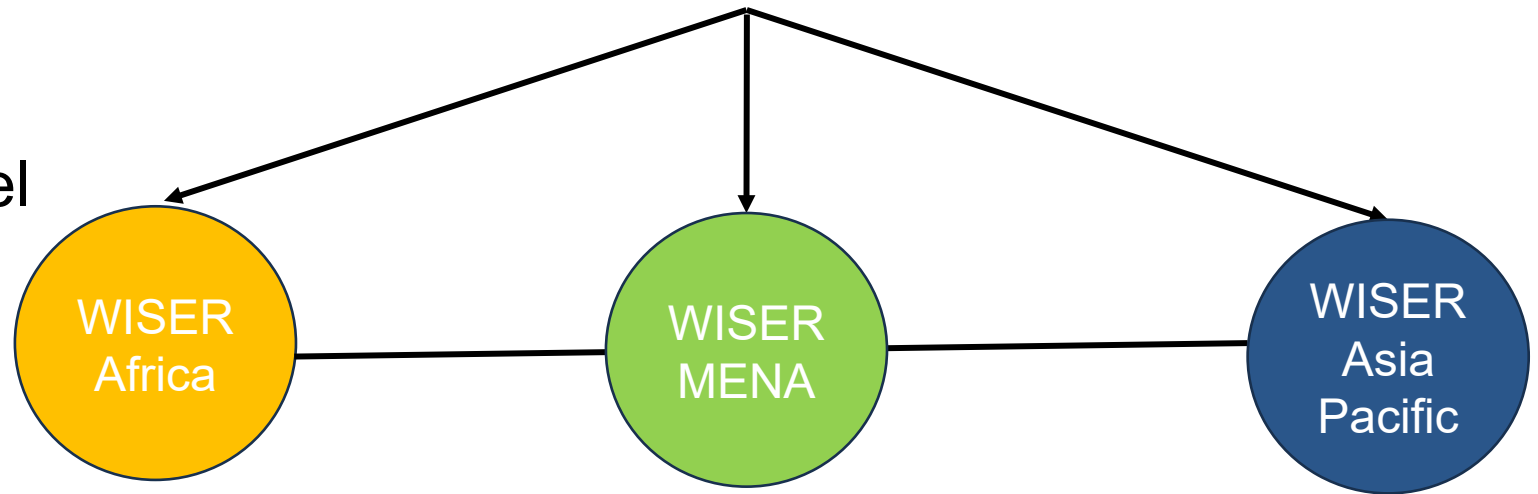
Introducing WISER

What is WISER?

WISER supports the generation, uptake and use of co-produced weather and climate services:

- better decision making across sectors at local, national and regional level for a range of users

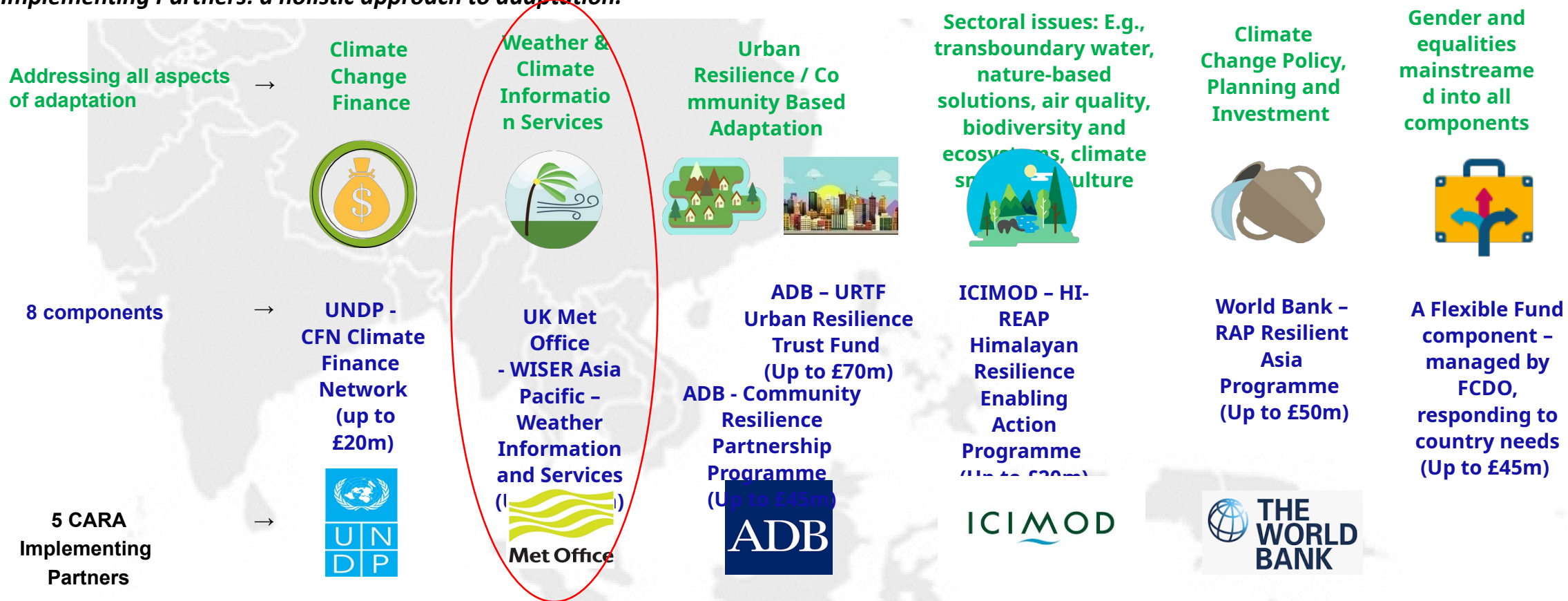
= building resilience to the impacts of climate change.





What is CARA? “Climate Action for a Resilient Asia” managed by FCDO’s Indo-Pacific Regional Department (IPRD)

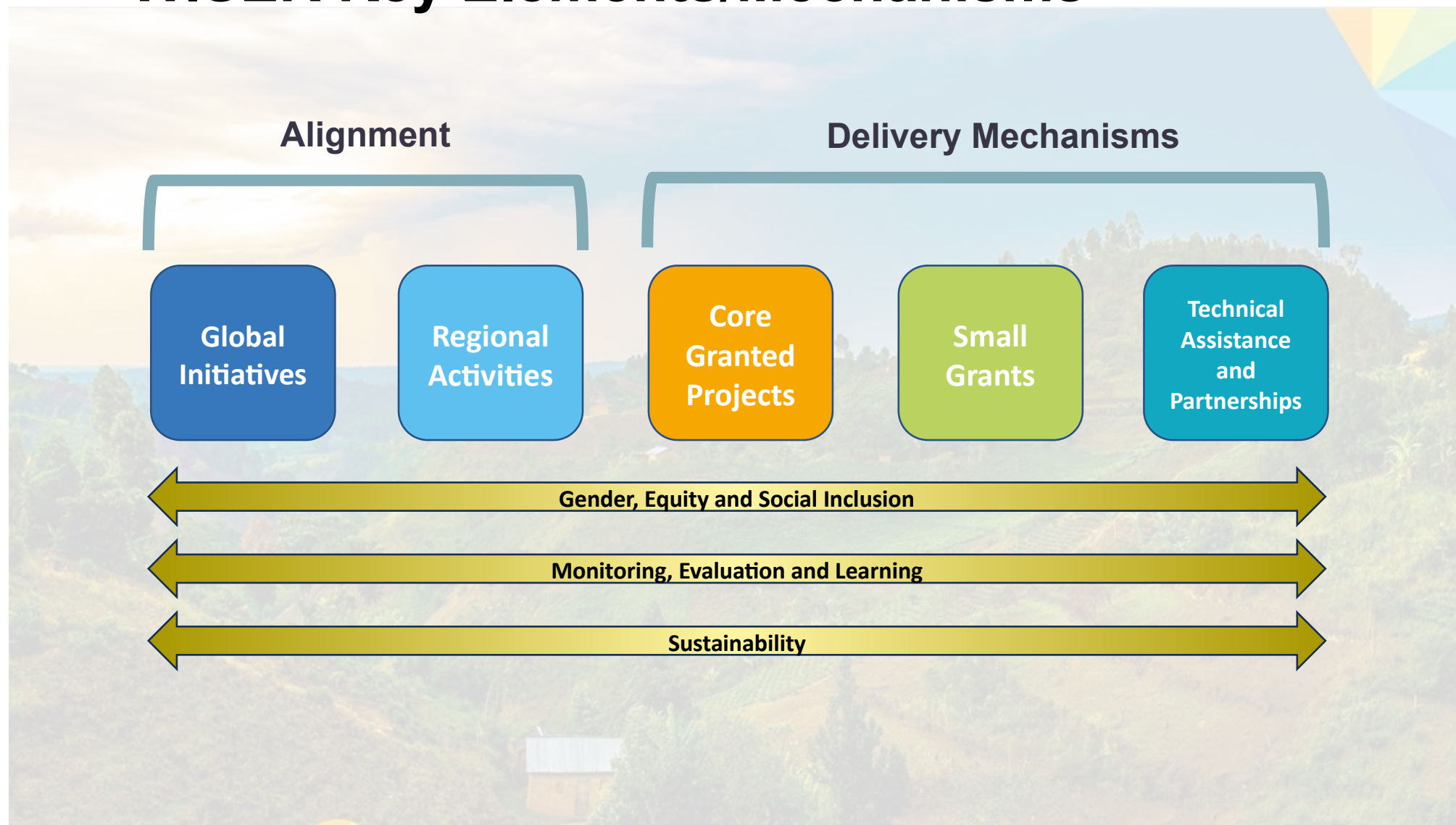
CARA is a nine-year (2022-2031), up to £274m, programme to help build the resilience of economies and vulnerable communities to climate change, improve the natural environment, and promote low carbon growth, across South Asia, South-East Asia, and the Pacific. Eight components and five Implementing Partners: a holistic approach to adaptation.



The 8th component is an extensive MEL contract covering monitoring, evaluation, learning, communications and engagement, managed by a consortium led by Triple Line Consulting

TRIPLELINE

WISER Key Elements/Mechanisms



WISER ASIA PACIFIC

Introducing WISER Asia Pacific

Objective

To improve quality, access, and use of Weather and Climate Information Services (WCIS) to strengthen the resilience of vulnerable people

Principles

Delivering transformational change in WCIS through:

1. Regional Approach
2. Co-production of new and/or improved services
3. Gender equity and social inclusion (GESI) first approach
4. Promoting partnerships

Themes



Improve capability of providers to disseminate WCIS



Support regional coordination, cooperation and capacity



Improve generation and communication of IBF to vulnerable communities and sectors



Enhance integration of WCIS into adaptation and policy

WISER Asia Pacific Themes

WISER

Weather and Climate Information Services

WISER Africa
(with ARCAN)

WISER MENA
(with PHENOMENAL)

WISER AP
(with CARA)

Programme Outline

Regional collaboration →

Pan-regional (e.g. UN ESCAP DRR and EW4ALL)
WISER AP & CARA partners

Sub regions →

South Asia

Southeast Asia

Pacific Islands

WISER AP partnerships →

South Asia Hydromet
Forum (SAHF)

ASEAN frameworks
and mechanisms

Secretariat of the
Pacific Regional
Environment
Programme (SPREP)

Regional projects →

Delivering weather & climate information for the most vulnerable

Discussion

Leveraging partner, donor, related initiatives and investment to support and enable to SAHF Climate Services work plan

Thank you

