

South Asia Hydromet Forum Forecasters' Forum Group

Date: 26 May 2024

SPECIAL RELEASE FOR THE CYCLONIC STORM "REMAL"

The latest update from the Regional Specialized Meteorological Centre (RSMC) for Tropical Cyclones over Northern, India Meteorological Department, regional and global models indicate that the **cyclonic storm "Re-Mal"** in the North Bay of Bengal has moved northward at a speed of 6 km/h over the past six hours. It has strengthened into a Severe Cyclonic Storm. As of 5:30 AM IST today, May 26, 2024, the storm's centre is located at latitude 19.5°N and longitude 89.3°E, approximately 290 km south-southwest of Khepupara (Bangladesh), 330 km south of Mongla (Bangladesh), 270 km south-southeast of Sagar Islands (West Bengal), 390 km south-southeast of Digha (West Bengal), and 310 km south-southeast of Canning (West Bengal).

The storm is expected to continue moving northward, gain more strength, and make landfall between Sagar Island (West Bengal) and Khepupara (Bangladesh), near southwest Mongla (Bangladesh) by midnight today. It is predicted to hit with wind speeds of 110-120 km/hr, with gusts up to 135 km/hr.

Under the influence of this cyclonic storm, countries are likely to experience following severe weather conditions.

Bangladesh:

Bangladesh is expected to experience widespread rain and strong winds, especially in areas like Khepupara and nearby regions, which will see heavy to very heavy rain and powerful winds. Coastal areas will face high ocean waves, likely causing flash floods, damage to infrastructure, and uprooted trees, disrupting normal activities.

Many low-lying coastal zones of Bangladesh are predicted to experience storm surge of about 2-2.5m with widespread inland inundation.

Myanmar:

The northern coastal areas of Myanmar are expected to experience heavy rain, strong winds, and high ocean waves. Starting May 27, 2024, the country will see widespread rain and thunderstorms, leading to flash floods, waterlogging, and damage to roofs and trees.

Bhutan:

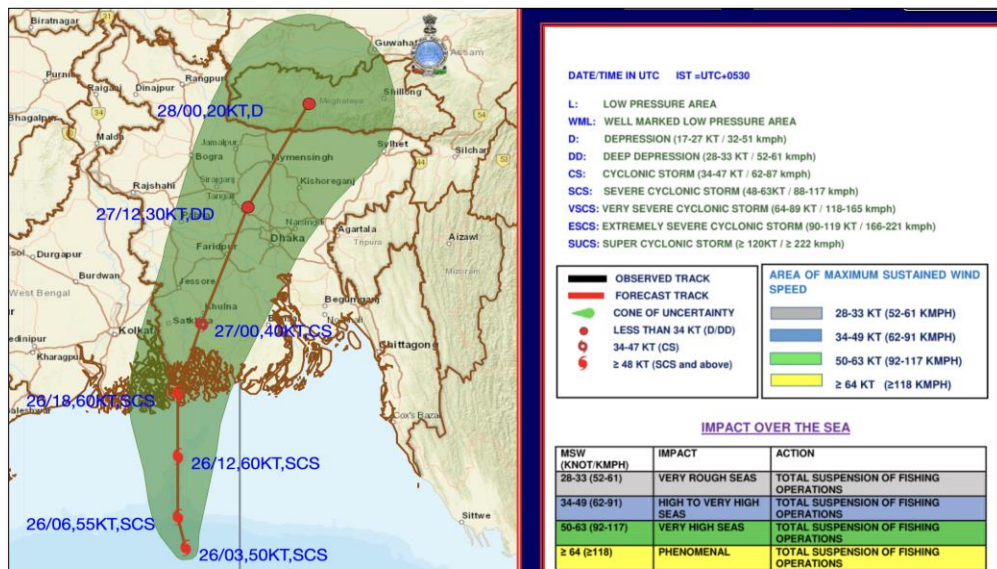
Bhutan is likely to receive widespread moderate to heavy rain and thunderstorms starting May 27, 2024. The southern and southeastern regions will experience heavy to very heavy rain with occasional strong winds after May 28, 2024. These conditions are expected to cause flash floods, landslides, and waterlogging.

Nepal:

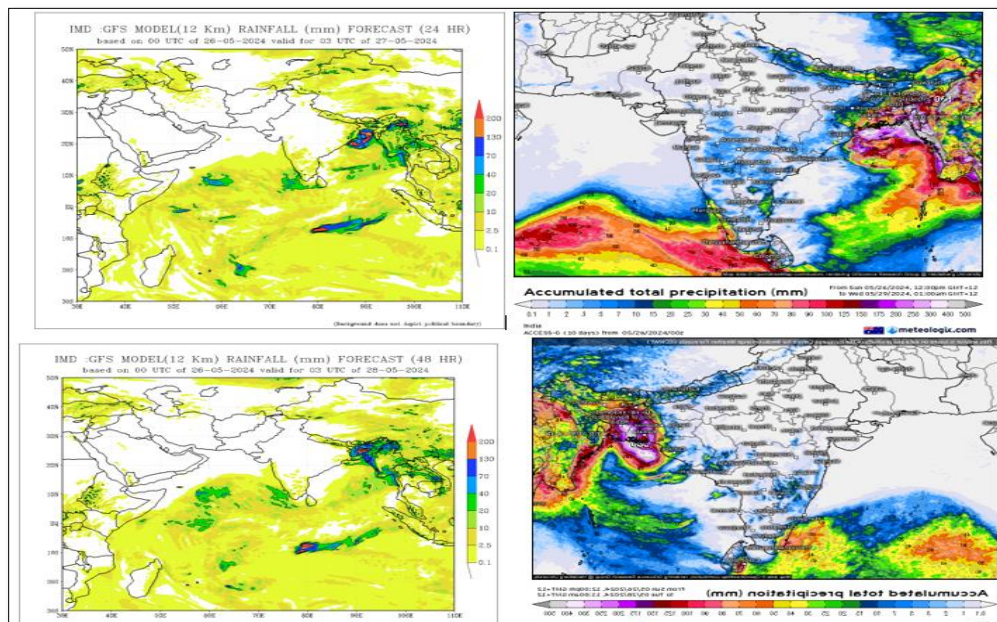
The southeastern parts of Nepal are expected to experience widespread moderate to heavy rain and thunderstorms with occasional strong winds. These areas are likely to face flash floods, landslides, and waterlogging.

The latest updates will be provided through FForums' **WhatsApp Group**. A special session for the cyclone is planned for 27 May 2024, 11:00-11:30 AM Bangkok Time.

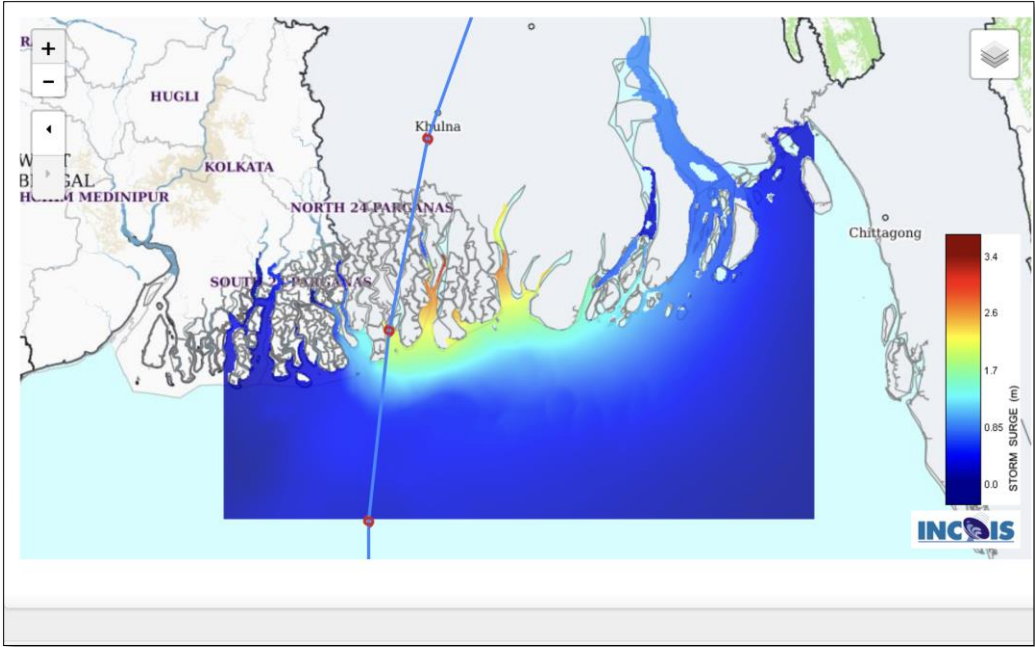
For more information refer: <https://rsmcnewdelhi.imd.gov.in/>



Cyclone track and cone of uncertainty



Latest model forecast for rainfall



Cyclonic storm landfall and storm surge. Storm surge of about 2-2.5m predicted.